



# GIS for Good Programs and Initiatives

Salim Sawaya – Esri Nonprofit & Global Organizations



# GIS

## and The Geographic Approach

Provide the Framework . . .  
. . . and Process

Integrating All the Factors . . .

Creating Understanding . . .

Finding Solutions . . .

. . . and Improving Collaboration

. . . To Address the SDGs



Data  
Collection

Visualization &  
Mapping

Analysis &  
Modeling

Planning &  
Geodesign

Decision-  
Making

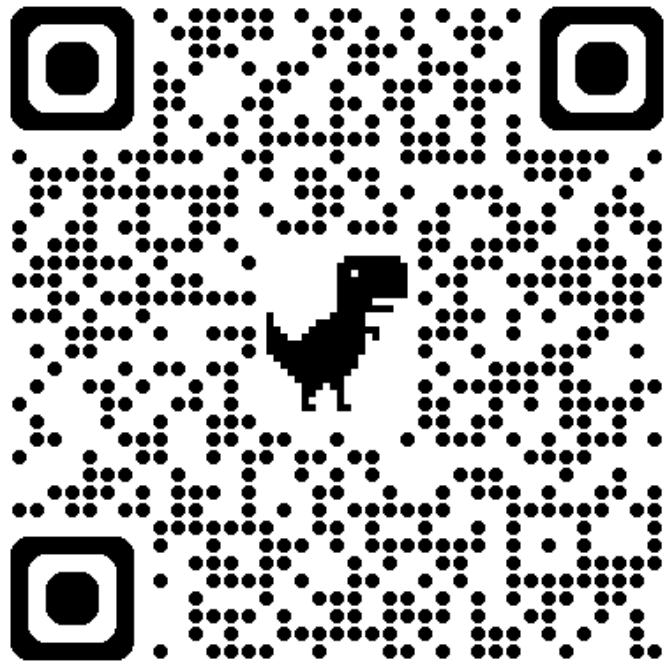
Action



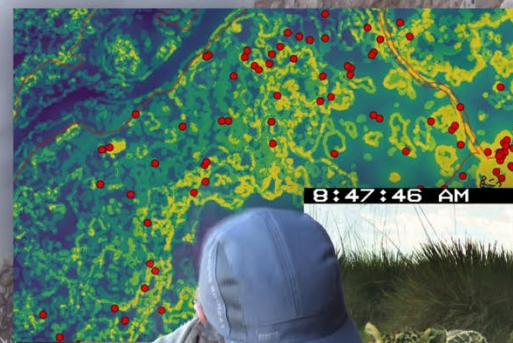


# GIS for Good

Esri Programs, Initiatives and Special Offerings, designed to help organizations apply the Geographic Approach to maximize impact for humanity and the planet







# CONSERVATION

Understanding & Protecting Nature

Supporting 7,000+ Organizations



# EDUCATION

Building the Next Generation

## Strategic Partnership

Promoting Geospatial Literacy  
& Developing GIS Skills

## Schools Program

ArcGIS for Schools

Helping Students & Teachers  
Everywhere

## Higher Ed Program

ArcGIS for Institutions,

Departments and Students

Curriculum Development

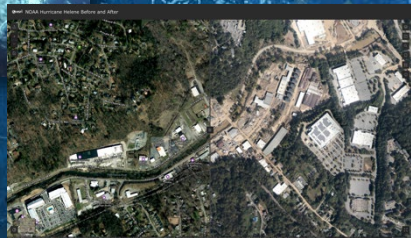
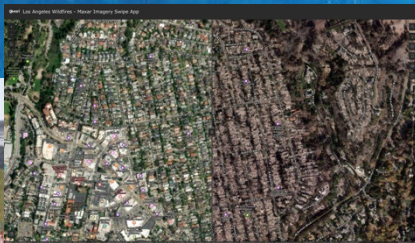


*Partnering with thousands of educational institutions*



# DISASTER RESPONSE

Supporting Users Globally in Times of Crisis



Undamaged	Total Structures
3,167	7,168

Red Cross and Red Crescent Movement  
Esri Partners  
UN Agencies  
HOT  
FEMA  
GISCorps  
MapAction  
iMMAP

*Partnered with*

Helping Thousands of  
Organizations Respond



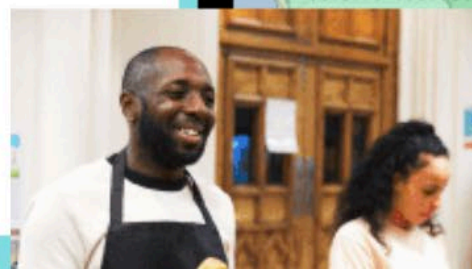
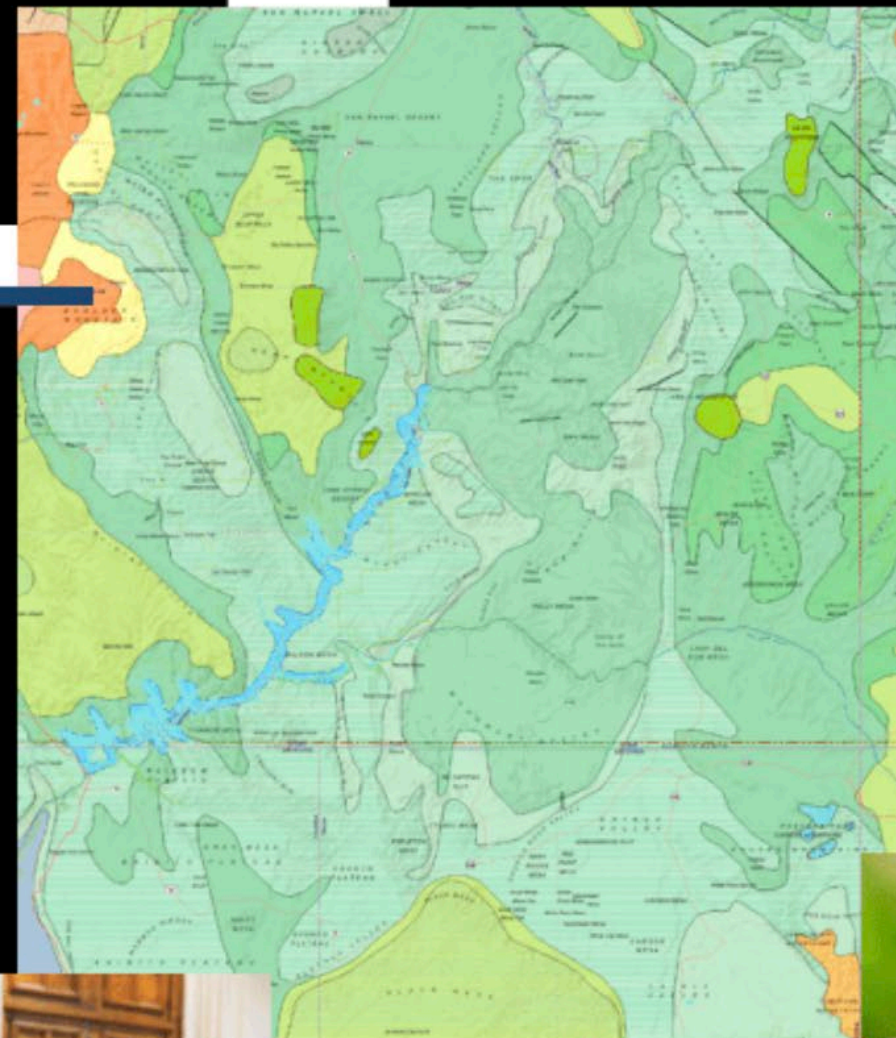




# Esri Nonprofit Program

Discounted offers on software, training, and content for nonprofit organizations

Apply Now →



# Geospatial Enablement Program

**Purpose:** Provide resource constrained governments with the software, geospatial infrastructure and produce the fundamental data sets critical for development



Agriculture

Disaster Management

Health

Land Administration

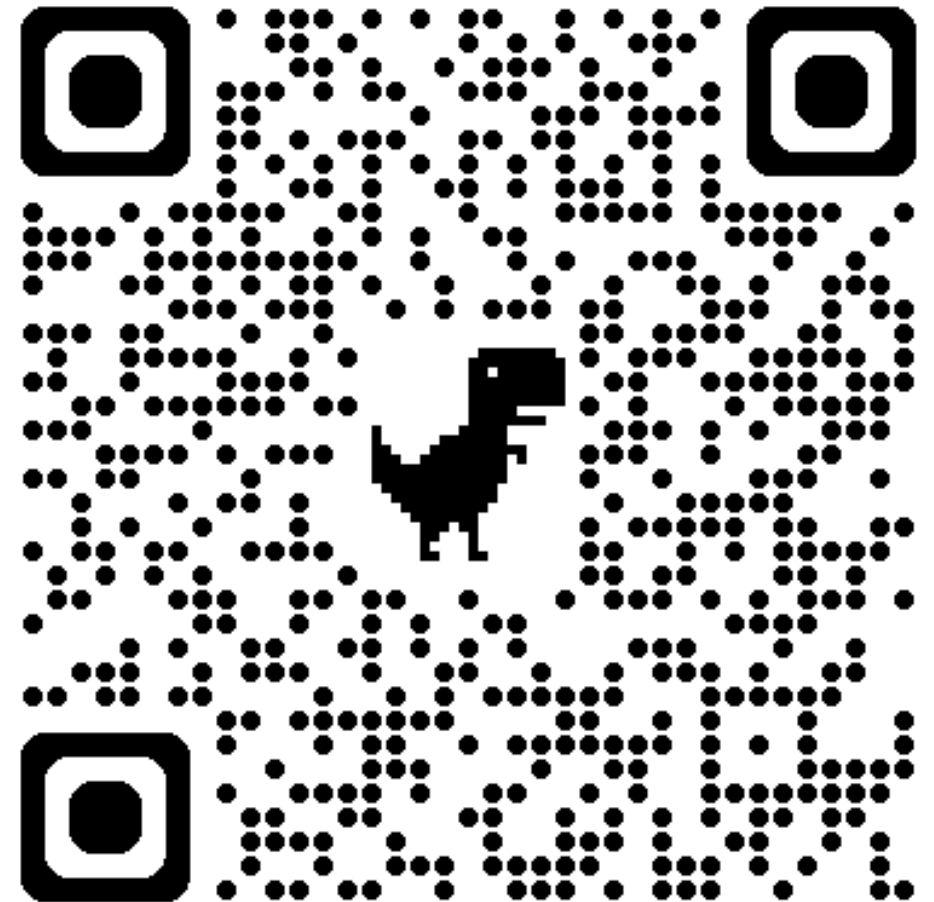
Maritime

Postal and Addressing

Official Statistics

Natioanal Mapping

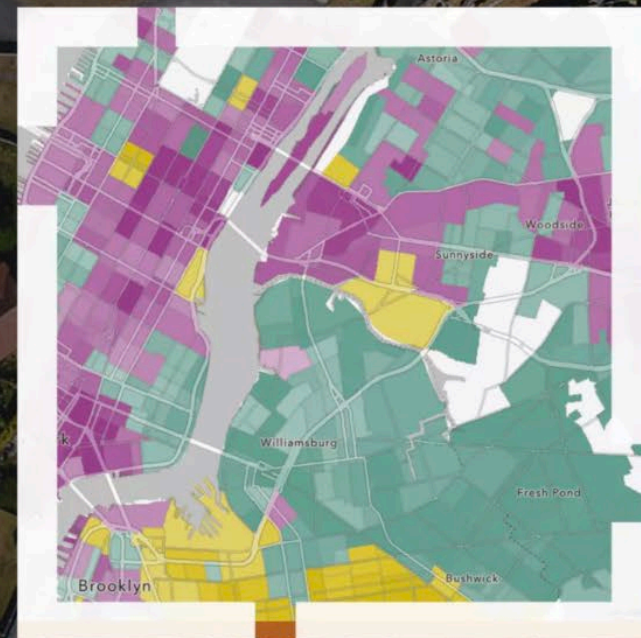
- Focus on
- **84+ (IDA**
- Offers fo
- Training a
- Licenses
- (renewals





# Geospatial Enablement Program for Official Statistics

A discounted program with software, training, and content for statistics and census organizations.



## Modernizing official statistics

Effective governance demands better information. Population and housing censuses provide data needed for formulating, implementing, and monitoring policies for inclusive socioeconomic development and sustainability. By incorporating geospatial technologies and geographic information systems, you can improve every stage of the census process.



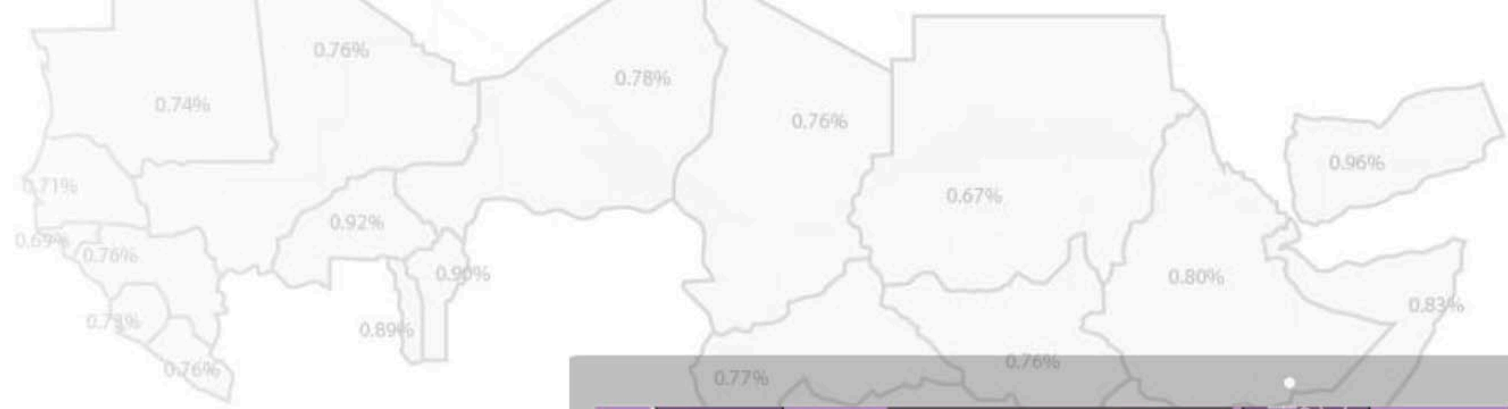
# Esri and UNFPA Extend Strategic Partnership to Support 2030 Census Round

October 22, 2025

*Collaboration Strengthens Census Through Location-Enabled Data Sharing*

**REDLANDS, California– October 21, 2025**—[Esri](#), the global leader in location intelligence, today announced the extension of its strategic partnership with the United Nations Population Fund (UNFPA) in support of the 2030 census round. Building on a successful collaboration during the 2020 census round, the partnership aims to embed geographic information system (GIS) technology into all phases of census work. By leveraging GIS, national statistics and census offices will gain access to more authoritative, location-enabled data and faster, more efficient methods of planning, collection, and dissemination.





0.62%

0.76%

# Global Public Health

0.73%  
0.72%  
Grant Program

Esri grants provide GIS tools and training for ministries of health and government health agencies in countries with low- and middle-income economies.





# Geospatial Enablement Program for Global Public Health

A program that offers discounted software, training, and content for ministries of health and governmental health agencies in countries with low- and middle-income economies.



## Understand and improve the public health landscape

Public health is inherently geographic—it requires spatial data collection, visualization, and analysis to understand disease outbreaks, health facility accessibility, and vaccination planning. To keep people safe and find vulnerabilities, it's crucial to know where disease cases are located and spreading.



# Geospatial Enablement Program for Disaster Risk Management

A discounted program with software, training, and content for disaster management agencies



## Manage and reduce disaster risk

Disaster risk management is a geographic problem. To understand and address risk, we must know where hazards are located in relation to vulnerable communities and infrastructure. Designing effective disaster risk management policies therefore requires comprehensive and up-to-date geographic insight.