



esri[®]

THE
SCIENCE
OF
WHERE™

BIENVENUE

WELCOME

TERVETULO A

BIENVENIDO

أهلا وسهلا

ยินดีต้อนรับ

SELAMAT DATANG

ようこそ

VÄLKOMMEN

Добро пожаловать

VELKOMMEN

WELKOM



Our World Is Being Challenged . . .

Because Humans Are Living Recklessly
and Unsustainably . . .
. . . Threatening Our Future.



COUNTRIES



EDUCATION

LEADERS



YOU | POWERFUL COMMUNITY OF GEOSPATIAL PROFESSIONALS

COMMUNITIES



BACKGROUNDS



INDUSTRY



YOUR WORK

Addressing All Our
World's Challenges

Economic Development

Pollution Nature Conservation **Health**

Energy Transparent Government

Natural Resources Climate Change

National Security Science & Technology

Business **Environment** **Water Resources**

Agriculture Social Conflicts

Urbanization & Development

Natural Disasters

Infrastructure

GIS – CREATING A SUSTAINABLE FUTURE



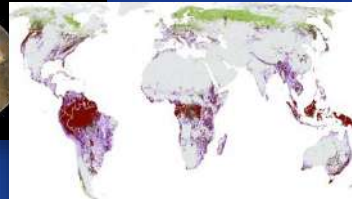
Across all industries and themes

Global Biodiversity Mapping



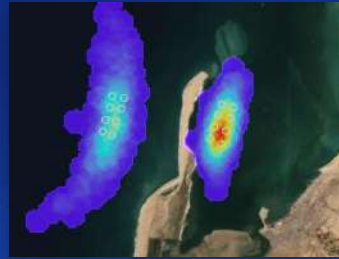
E.O. Wilson Biodiversity Foundation
Ethiopia

Carbon and Biodiversity Modeling



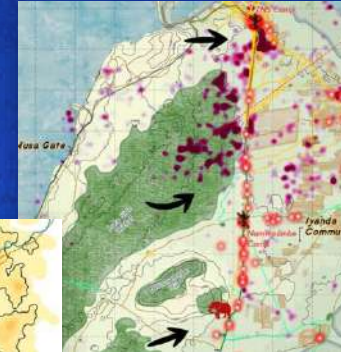
Conservation International
Global

Aquaculture Planning



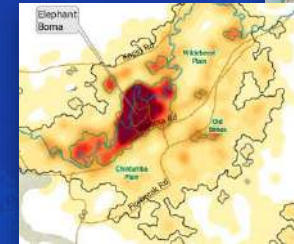
Innovasea Systems
West Coast of Africa

Human-Elephant Conflict



Game Rangers International
Kafue National Park, Zambia

Elephant Home Range

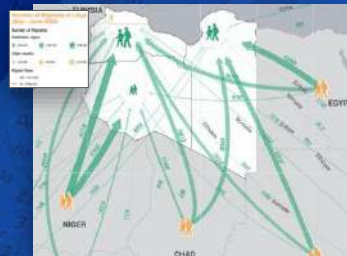


Cadastre without Borders



NEXAFRIKA
Kinshasa, DRC

Population Migration to Libya



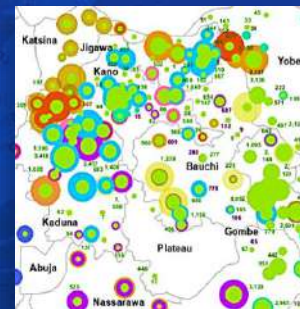
PwC Polska
Libya

Access to Health Facilities



Columbia University
Gombe District, Zambia

Assessing Agricultural Markets



Propcom Mai-Karfi,
Palladium Group
Nigeria

Crop Health (NDVI)



Kenneth Kwabena
Eastern Region of Ghana

The Geographic Approach

A Way of Thinking and Problem Solving
That Integrates Geographic Science & Information
Into How We Understand and Manage Our Planet

Science Based

Integrated

Holistic

Spatial
Understanding

Supporting
Multi-Objective
Solutions

Collaborative

GeoScience
and Understanding

*... An Inclusive and Multi-Disciplinary Process
Impacting Every Sector of Society*



GIS Professionals . . .

Are Already Applying The Geographic Approach

Creating Solutions for a More Sustainable Future



However,
We Need to Scale Up Our Collective Efforts . . . Exponentially

Geospatial Community of Interest



Geospatial Infrastructure Is Transforming Organizations

Creating a Whole New Kind of Intelligent Infrastructure . . .

An Interconnected
Network of Systems,
Services and Apps

Supporting
All Types of Users

APPS
For Everyone

**SHARED
GEOSPATIAL
SERVICES**

PORTALS
For Organized
Discovery & Access

Integrating All Types
of Data and Analytics

Open &
Interoperable

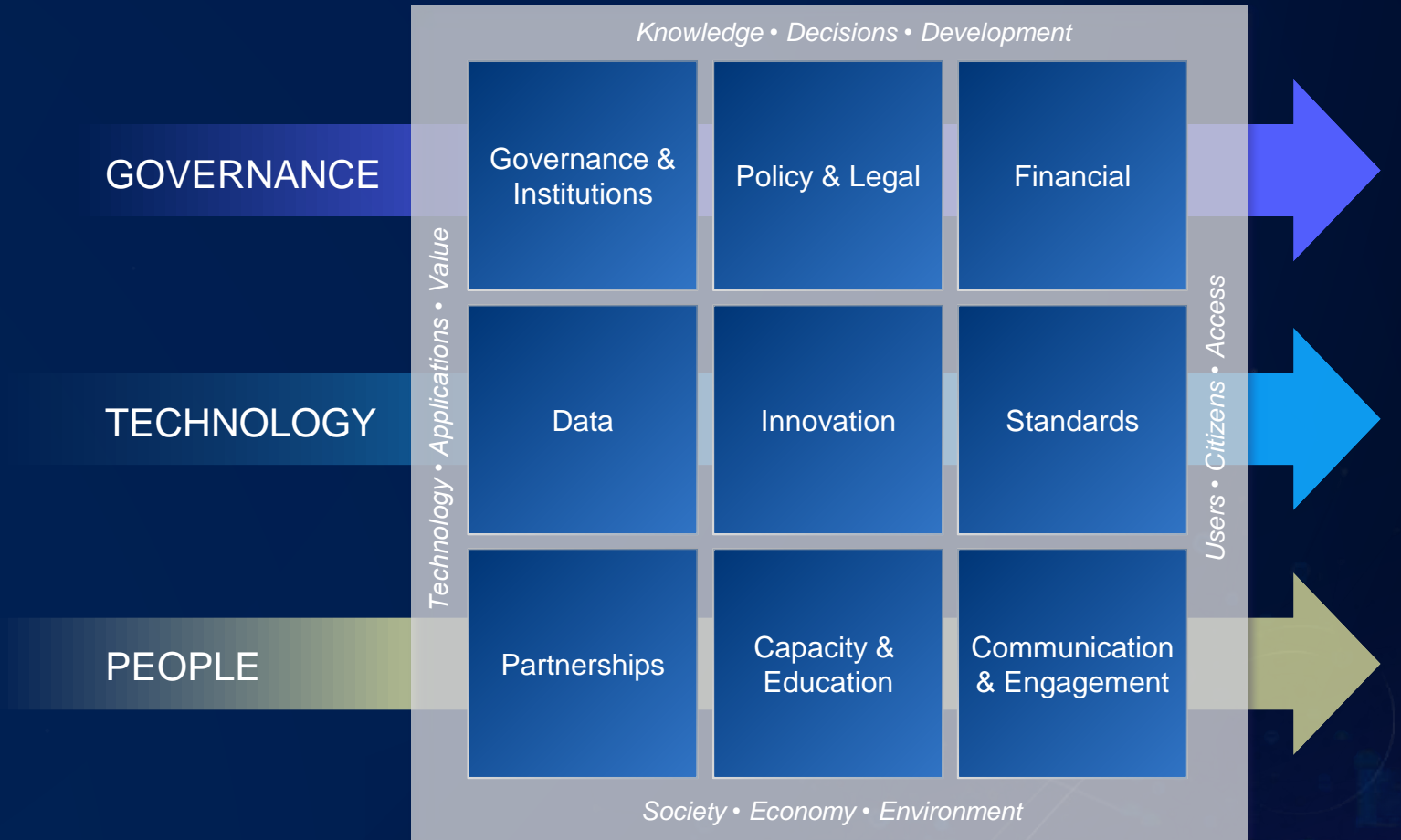
Organizing and Making Available Distributed Geospatial Services



UNGGIM – Integrated Geospatial Information Framework

A Framework for Implementing Modern SDI

The Integrated Geospatial Information Framework provides a basis and guide for developing, integrating, and strengthening geospatial information management.



9 Strategic Pathways



ArcGIS

OUR WORK

Creating Useful Technology
Helping Our Users Be Successful

Products

Support

Education



ArcGIS Vision

A Comprehensive Geospatial Platform – Supporting Multiple Communities

Mapping &
Location Services

Geo-Enabled
Systems

GIS

Location
Analytics

Open and Developer
Friendly

ArcGIS

Software, SaaS and PaaS



PARTNER ECOSYSTEM

COMMITTED TO YOUR SUCCESS

ICF CHETU GPS IT ALLWORLD ARX IT CAPGEMINI PENNONI
MOSS VGIS COMPASSCOM AVENTIOR DAWOOD
EBA LOGIC SKYTEC DYMAPTIC 2NDNATURE RMSI VOLUE BAY PARK DATA
SOLV3D HOUNDER PANDELL G2 INTEGRATED SWIFT GEOSPATIAL
PRESAGIS IDOX SOFTWARE CLEARION VEXCEL LARSON DESIGN
EARTH ANALYTIC WHITESTAR BAD ELF CDM SMITH HONEY BADGER ANALYTICS
EA EPOCH CHA DATA+ ACTIVEG SYMOLOGY RECORDED FUTURE FUGRO UPTILITY
EDR LIGHTBOX CLEVEST EPISTEMIX SPIRE GLOBAL
IDEMA ARDENT L3HARRIS ARC-GREENLAB LASER TECH GEOWORX
WSB ICA GEOACUITY MAGNOLIA RIVER MIPMAP 1898 & CO IKEGPS
SILVERNAIL STUDIO 3 GIS GEO JOBE THALES DATA EAST
BHA NJVC WOOLPERT GEOCOMM ATOS
SIGGIS POWER ENGINEERS SBS HERE SPATIALITICS SAFEGRAPH DVG
ELEMENTS XS OSISOFT TERRAGO
AIRSPACE LINK GISINC PRO-WEST DELOITTE SYNERGY SYSTEMS & SERVICES
EPTISA RAMTECH EOS POSITIONING DATASTORY SANBORN
ENVIRONICS ANALYTICS TRIMBLE BLUE RASTER IP SYSCON UDC LANGAN
SPATIALGIS GEOCONVERGENCE ROUTESMART INTEGRAL GIS
UTILISYNC BCS BARAL NEW CENTURY CON TERRA EXPRODAT SIMILIX VHB
ONE HUNDRED FEET FRONTIER PRECISION TEXIAN GEOSPATIAL
VIEWPRO TRIMBLE FORESTRY NEARMAP SSP INNOVATIONS INNOVATE! HDR
FPRE BTC INTELLIGIS WOODARD & CURRAN ACCELA
NEXIGA TUKUH BRANDMAN UNIVERSITY ENGHOUSE AECOM GRANT THORNTON
NEXGEN DEWBERRY FLOODMAPP VERTIGIS NA DAVIS DEMOGRAPHICS TYLER TECHNOLOGIES POWERGIS INDOORVU
SEARU TRUE NORTH GEOSPATIAL INNOVATIONS FIRST AMERICAN DATA TREE SUNRISE ENGINEERING
COMPASSDATA QUARTIC HAWKEYE 360 DATACAPABLE TRACASA THE RIGHT DIRECTION RS&H
WEJO SAFE SOFTWARE GEOCOM BY VERTIGIS CARTEGRAPH CRITIGEN XYLEM PLANET TOPOMAT MSA
HIGHLAND MAPPING CLOUDPOINT GEOSPATIAL AEROMETREX CITYWORKS MAXAR CYBERTECH EMBEDDED ALLIANCE BLUEDOT
NATURESERVE SPATIAL.AI CYCLOMEDIA SIDWELL NVIDIA LOCATUS NORTH POINT UTILIS
OPENPOINT DTN UNACAST EAGLEVIEW SCHNEIDER ELECTRIC SYMGEO LOCUSVIEW NSGIS OPE XTOOLS
PLW MODELWORKS DRY CREEK ENGINEERING HOUSEAL LAVIGNE OPTIMUS GIS GEOFIELDS
CIVICLENS GEOGRAPH AED-SICAD BY VERTIGIS GEODECISIONS PANDA CONSULTING GEONEXUS
LSA ETI VEGA MONITORAMENTO AVINEON ROK TECHNOLOGIES TIMMONS GROUP BERNTSEN CARL SOFTWARE TEAM AR
OCEAN SKY THE SOLUTION STACK TENSING SKYTECH SERVICES PLACEWORKS ITPIPES
RIDEAMIGOS GBS AIRBUS GEOSPARK ANALYTICS VESTRA RESOURCES EQUINOX GEOSPATIAL UM ARGIS SOLUTIONS PTFS
INNOVYZE BAE SYSTEMS 1SPATIAL NORTH LINE GIS LEICA GEOSYSTEMS PATRICK ENGINEERING MAYDAY.AI TESSELLATIONS INCATECH
4CTECHNOLOGIES VECTORWORKS INC MAGELLIUM R&K SOLUTIONS ISPATIAL TECHNO ERICSSON ELYON GCS
URSA SOPORTA GEOMARVEL AEGEAN ENERGY URBAN GIS SEERAI CYIENT ZEBRA PRAESCIENT
KCI KLOUDGIN RIEGL USA ES2 MILLER SPATIAL GTG GARSDALE

www.africageoportal.com



GeoPortal Data Tools Learn Map

The Africa GeoPortal

Inspiring communities through geography

Le Géoportail de la Côte d'Ivoire

bnetd | Le Géoportail de la Côte d'Ivoire s'appuie sur les référentiels du BNETD et sur des producteurs de données institutionnels et privées pour vous proposer une information fiable sur le pays.

Les Géodonnées

cotedivoire.africageoportal.com

SPECIAL RELATIONSHIPS

Partnering & Collaborating on Shared Missions

WILSON CENTER FEEDING AMERICA
TERRITORIAL EMPATHY UNOSAT **NATIONAL GEOGRAPHIC SOCIETY** LINCOLN INSTITUTE
AFRICAN WILDLIFE FOUNDATION WINROCK INTERNATIONAL CGIAR **W.K. KELLOGG FOUNDATION**
WORLD VISION **SUSTAINABLE DEVELOPMENT SOLUTIONS NETWORK** NAACP
USAID CHESAPEAKE CONSERVANCY CONSERVATION INTERNATIONAL IIASA **FAO** HALO TRUST
CIESIN **JANE GOODALL INSTITUTE** HABITAT FOR HUMANITY **INSARAG**
NATURESERVE GOVERNMENT ALLIANCE ON RACE AND EQUITY (GARE) TEAM RUBICON
WORLD WILDLIFE FUND CATHOLIC RELIEF SERVICES **WORLD BANK** UN-HABITAT
UNHCR **AFRICAN PARKS** BILL & MELINDA GATES FOUNDATION **GICHD**
AFRICAN PEOPLE AND WILDLIFE **WORLD FOOD PROGRAMME**
NATIONAL AUDUBON SOCIETY FIELD MUSEUM TRUST FOR PUBLIC LAND
YMCA OF THE USA **DIRECT RELIEF** IOM **UN STATISTICS DIVISION**
E.O. WILSON BIODIVERSITY FOUNDATION
NATIONAL CENTER FOR MISSING AND EXPLOITED CHILDREN (NCMEC)
PEACE PARKS FOUNDATION AMERICAN PRAIRIE RESERVE
UNEP **WORLD HEALTH ORGANIZATION**
INTER-AMERICAN DEVELOPMENT BANK UNICEF
THE HALF EARTH PROJECT MACARTHUR FOUNDATION
RACIAL EQUITY ANCHOR COLLABORATIVE **IUCN**
THE NATURE CONSERVANCY DEMOCRACY LABS
AMERICAN RED CROSS WORLD RESOURCES INSTITUTE
NATIONAL TRUST FOR HISTORIC PRESERVATION
UN PEACE OPERATIONS UNITED WAY
AMERICAN CANCER SOCIETY

NETHOPE

DIRECT RELIEF

WILSON CENTER FEEDING AMERICA

LINCOLN INSTITUTE

AFRICAN WILDLIFE FOUNDATION WINROCK INTERNATIONAL CGIAR **W.K. KELLOGG FOUNDATION**

WORLD VISION **SUSTAINABLE DEVELOPMENT SOLUTIONS NETWORK** NAACP

USAID CHESAPEAKE CONSERVANCY CONSERVATION INTERNATIONAL IIASA **FAO** HALO TRUST

CIESIN **JANE GOODALL INSTITUTE** HABITAT FOR HUMANITY **INSARAG**

NATURESERVE GOVERNMENT ALLIANCE ON RACE AND EQUITY (GARE) TEAM RUBICON

WORLD WILDLIFE FUND CATHOLIC RELIEF SERVICES **WORLD BANK** UN-HABITAT

UNHCR **AFRICAN PARKS** BILL & MELINDA GATES FOUNDATION **GICHD**

AFRICAN PEOPLE AND WILDLIFE **WORLD FOOD PROGRAMME**

NATIONAL AUDUBON SOCIETY FIELD MUSEUM TRUST FOR PUBLIC LAND

YMCA OF THE USA **DIRECT RELIEF** IOM **UN STATISTICS DIVISION**

E.O. WILSON BIODIVERSITY FOUNDATION

NATIONAL CENTER FOR MISSING AND EXPLOITED CHILDREN (NCMEC)

PEACE PARKS FOUNDATION AMERICAN PRAIRIE RESERVE

UNEP **WORLD HEALTH ORGANIZATION**

INTER-AMERICAN DEVELOPMENT BANK UNICEF

THE HALF EARTH PROJECT MACARTHUR FOUNDATION

RACIAL EQUITY ANCHOR COLLABORATIVE **IUCN**

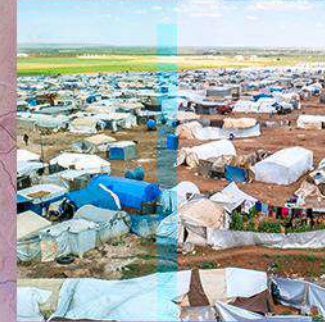
THE NATURE CONSERVANCY DEMOCRACY LABS

AMERICAN RED CROSS WORLD RESOURCES INSTITUTE

NATIONAL TRUST FOR HISTORIC PRESERVATION

UN PEACE OPERATIONS UNITED WAY

AMERICAN CANCER SOCIETY



EDUCATION

Building the Next Generation

Schools Program

For K-12 Schools

Higher Ed Program

ArcGIS for Institutions,
Departments and Students

Partnering Closely with
The National Geographic Society

*Helping Students Everywhere
Acquire Geospatial Literacy
and Develop GIS Skills*

TeachwithGIS.com



GeoInquiries

GeoMentors



Merci Thank you

AfricaGIS 2021

Matthew Pennells
Regional Manager – Africa
Esri

