

# Egypt Public DSS



THE RIGHT OF ACCESS TO INFORMATION



## Egy-GeoInfo

بوابة مصر المعلوماتية الجغرافية

EGYPTIAN GEOSPATIAL INFORMATION PORTAL

[www.geoportal.capmas.gov.eg](http://www.geoportal.capmas.gov.eg)



Central Agency for Public  
Mobilization and Statistics  
Arab Republic of Egypt



World Food  
Programme



# Egypt ... Egypte ... Egipto ... Egitto



**94.8** million capita  
Population estimates  
2017

**336.6** billion USD  
GDP at current prices  
2016

**34.8** billion USD  
Merchandized exports  
at current USD 2016



# Egypt ... Egypte ... Egipto ... Egitto



Annual Statistical Book  
(2017) no.

**108**

Census (2017) no.

**14**

First census was

**1884**



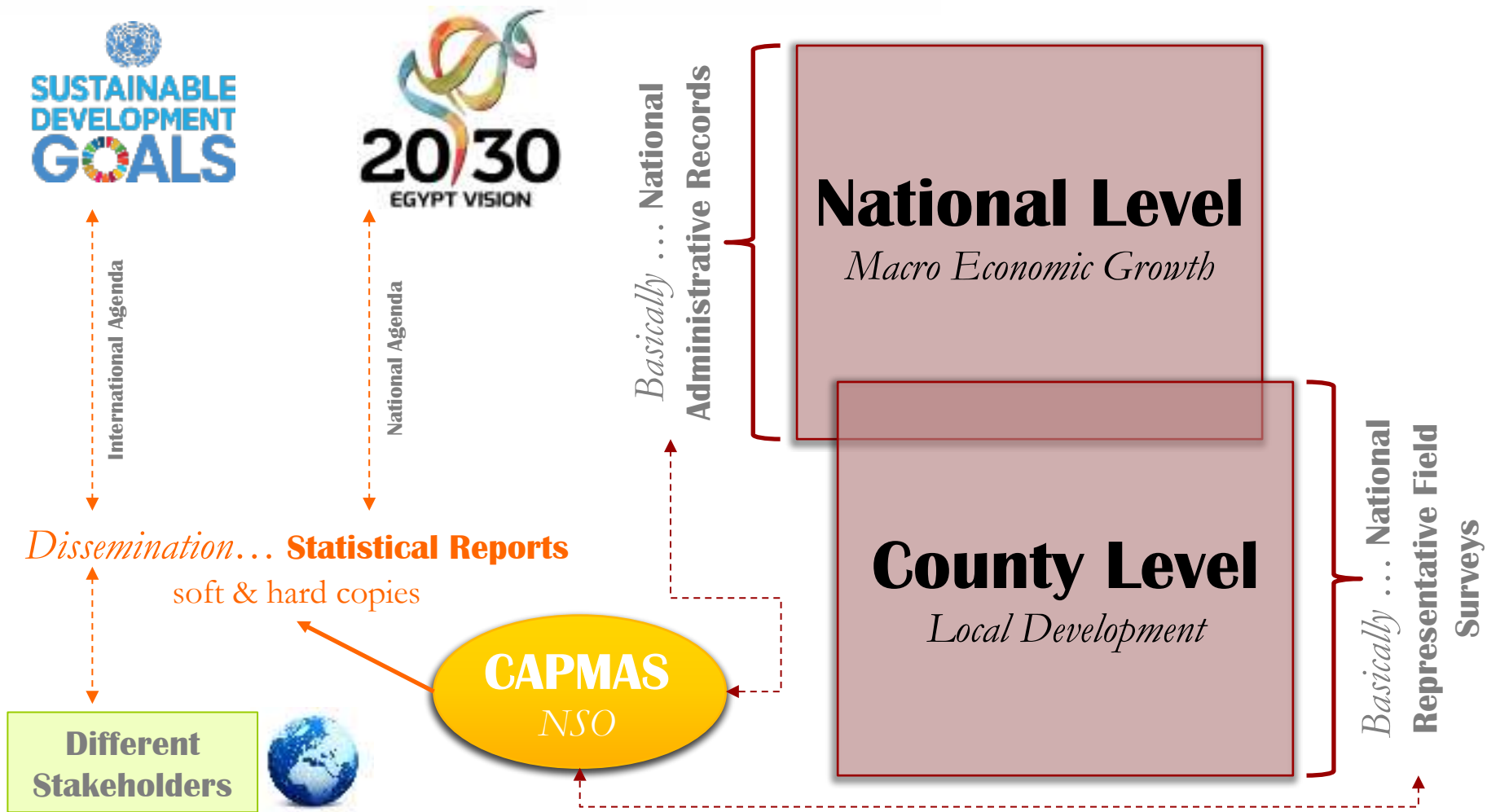
# Why Egypt needs this portal?

- ⦿ To identify the progress and/or regress in various economic and social dimensions.
- ⦿ To support the sustainable economic development activities, which are being achieved either from the government, civil society or the private sector.
- ⦿ To provide the evidence-based regional infrastructure that is enabling the M&E activities of Egypt Vision 2030 and the SDGs





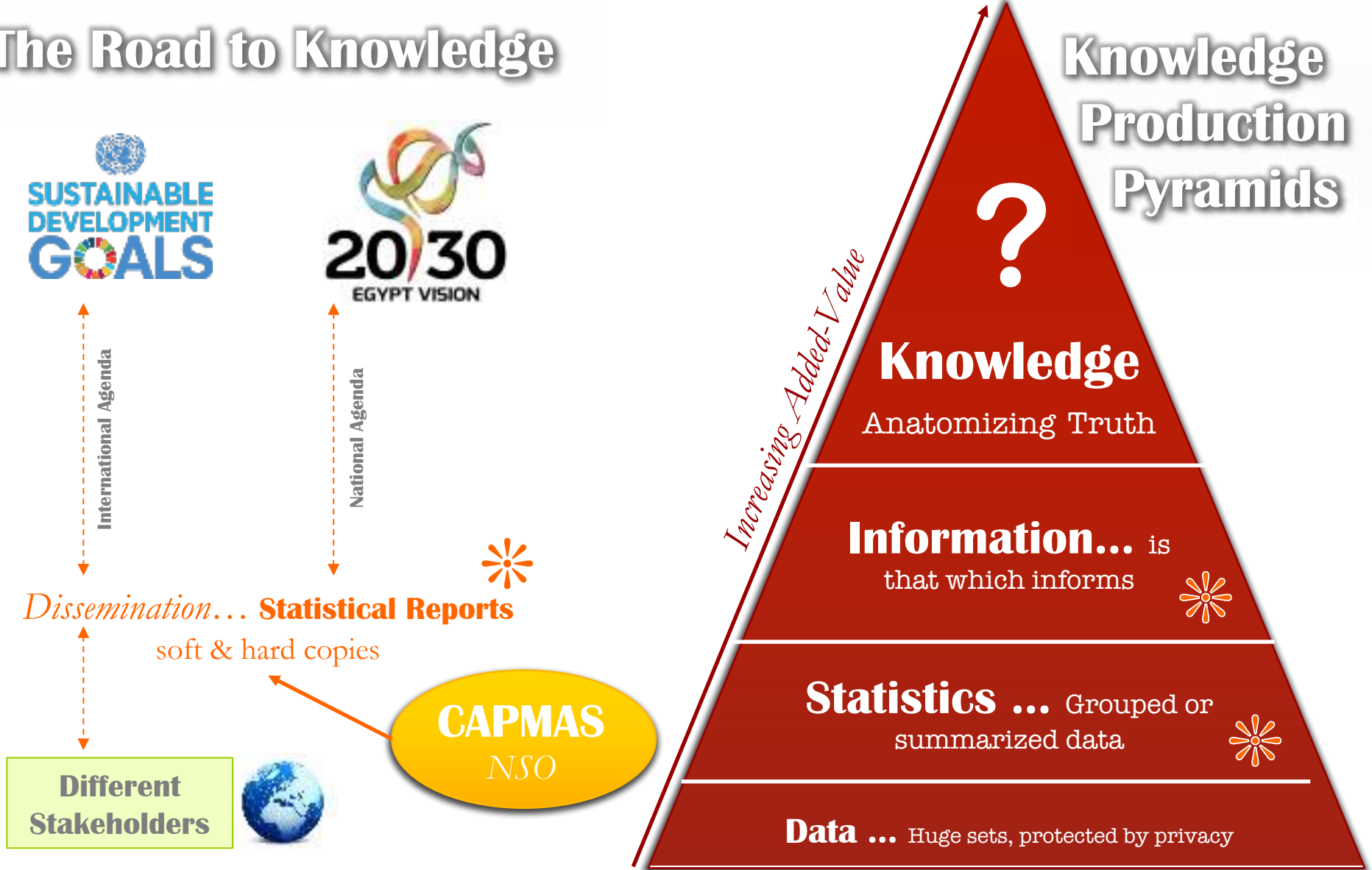
# Mechanism of NSOs ... Egypt case





# The Road to Knowledge

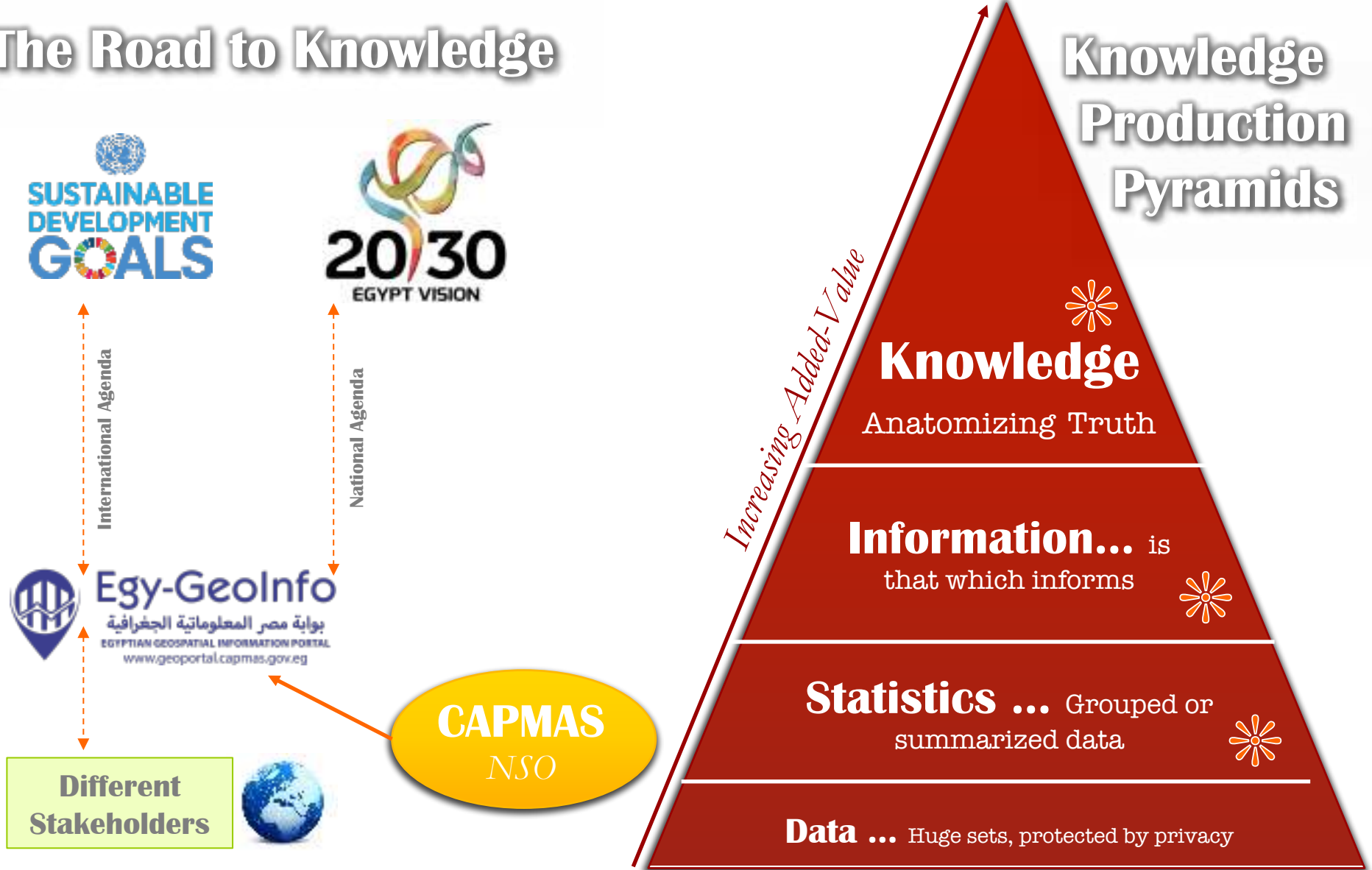
# Knowledge Production Pyramids





# The Road to Knowledge

# Knowledge Production Pyramids





# Vision

The Egyptian geospatial system that enables the planning and decision support processes in various aspects of investments and sustainable development, as well as illustrates the national system of official statistics to crystalize the image of Egypt worldwide.



# Success Novelty



- ⊙ Has the vision of what should be delivered to the policy-oriented users.
- ⊙ Has the data and statistics.
- ⊙ Needs to advance the infrastructure.
- ⊙ Needs to have the know-how of developing such technology.





# Success Novelty

CAPMAS

- ⊙ Interests in supporting national food and nutrition monitoring capacity at the national level using all available data.
- ⊙ Interests in supporting the government activities of sustainable development.
- ⊙ Has the appropriate experience in advancing the info-structure.

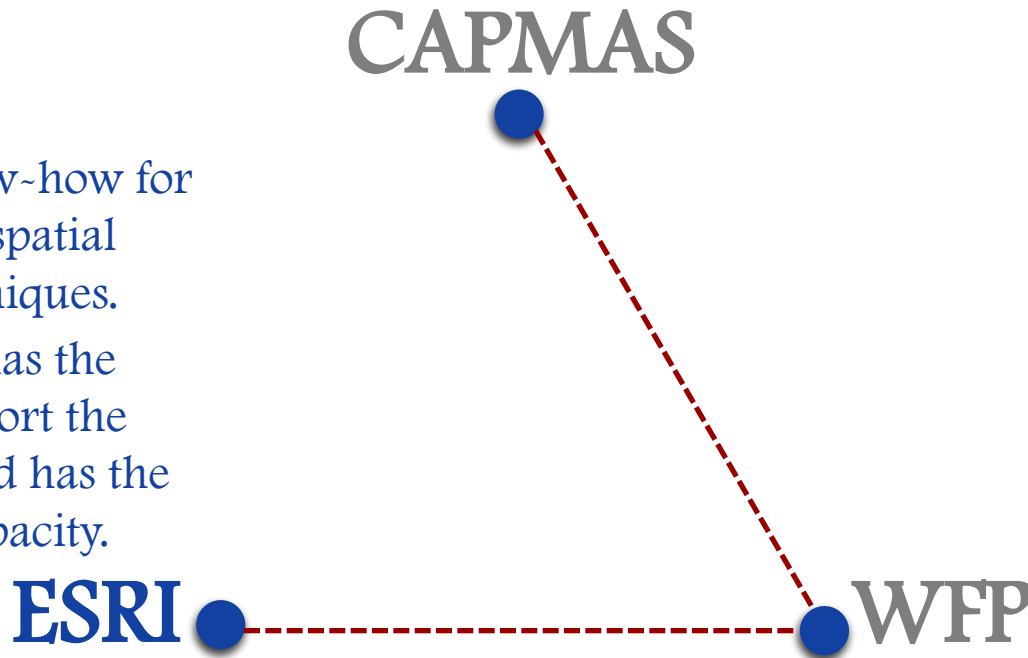
WFP





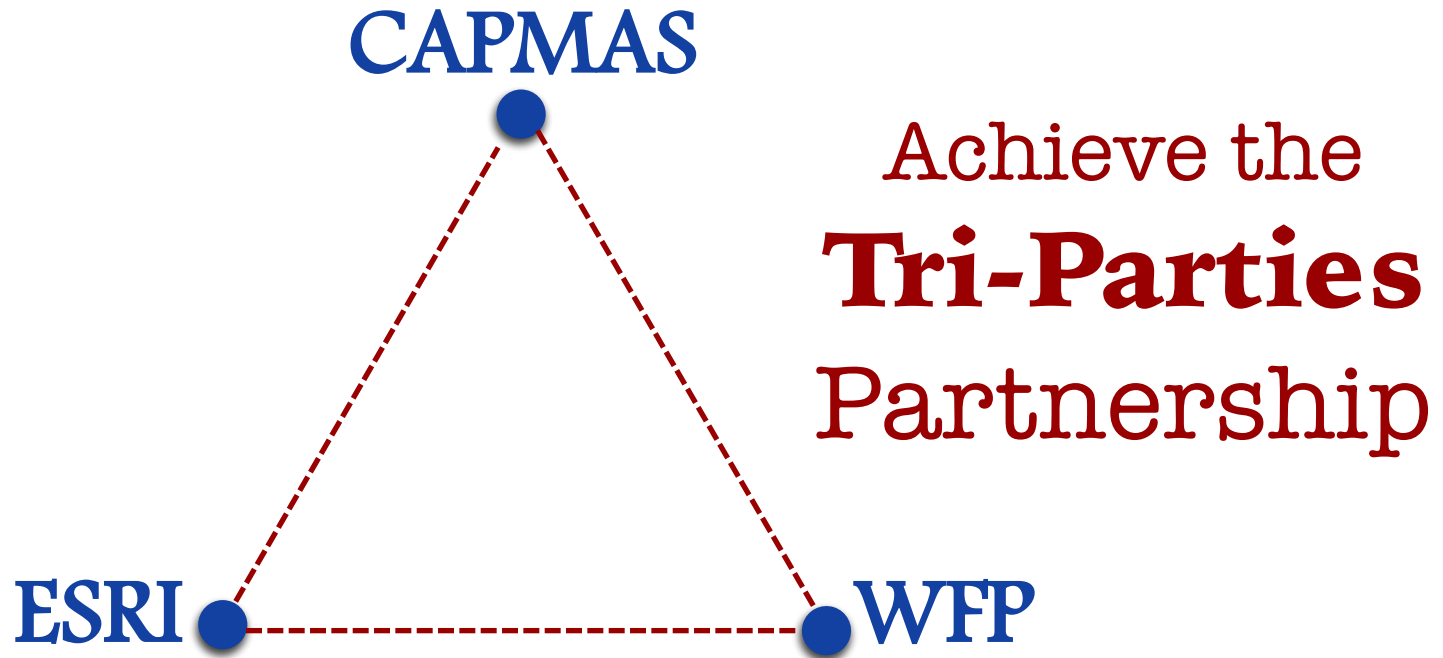
# Success Novelty

- ⦿ Has the know-how for developing geospatial analytical techniques.
- ⦿ ESRI-Egypt has the willing to support the government and has the appropriate capacity.





# Success Novelty





# Architecture



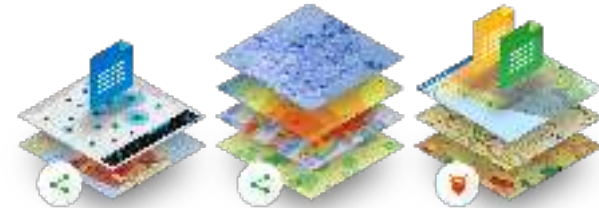
*External DB*



## Egy-GeoInfo

بوابة مصر المعلوماتية الجغرافية  
EGYPTIAN GEOSPATIAL INFORMATION PORTAL  
[www.geoportal.capmas.gov.eg](http://www.geoportal.capmas.gov.eg)

*Geospatial*



Egy-GeoInfo  
بوابة مصر المعلوماتية الجغرافية  
EGYPTIAN GEOSPATIAL INFORMATION PORTAL

*Internal access version*



*DBWH*



# Know-How



Team of  
Economists and  
Statisticians

CAPMAS formulated  
**Two Technical  
teams**



Team of  
Developers, GIS Specialists  
and other ICT branches

The government teams received the consultations from

**WFP & ESRI**



**Egy-GeoInfo**  
بوابة مصر المعلوماتية الجغرافية  
EGYPTIAN GEOGRAPHICAL INFORMATION PORTAL  
[www.geoportal.capmas.gov.eg](http://www.geoportal.capmas.gov.eg)



# Challenges



Collect all statistical databases in  
**Geospatial Database  
Warehouse**

Unify and harmonize  
**Metadata and  
Classifications**

Keep the process  
**Updated**



# Published Alpha version

Published in  
**November** 2016

More than  
**100** thousand visits

More than  
**35** workshops/ conferences

[www.geoportal.capmas.gov.eg](http://www.geoportal.capmas.gov.eg)



**Egy-GeoInfo**  
بوابة مصر المعلوماتية الجغرافية  
EGYPTIAN GEOSPATIAL INFORMATION PORTAL  
[www.geoportal.capmas.gov.eg](http://www.geoportal.capmas.gov.eg)





Central Agency for Public  
Mobilization and Statistics  
Arab Republic of Egypt



# Egy-GeoInfo

بوابة مصر المعلوماتية الجغرافية

EGYPTIAN GEOSPATIAL INFORMATION PORTAL

[www.geoportal.capmas.gov.eg](http://www.geoportal.capmas.gov.eg)

2<sup>nd</sup> Generation

New function of  
**Geo-Analytics**

Detailed results of  
**Census 2017**



# Notable Success

Due to 3 year of developing such experience

**E  
G  
Y  
P  
T**

**Achieved 1<sup>st</sup> paperless**

**e-Census**

**2017**





## Launching Census results, 30 Sep 2017

After only two weeks of the last field activities, CAPMAS launched the census results in-front of the President, Prime-Ministers, Ministers, and Elites.





### Egy-GeoInfo

بوابة مصر المعلوماتية الجغرافية  
EGYPTION GEOINFORMATION PORTAL



أدريين نسوية

# 94.8

إجمالي السكان

المصدر: تعداد السكان، والإسكان، والبيئات (T-4)

هذا الخط المستقيم ليست في أي مساحة ولا تعبر عن أي شيء أو  
شيء مساحي أو قانوني ولها هي للأراضي الخصائية فقط لا غير



20/30  
www.bsmpea.gov.eg

حقوق الملكية الفكرية والنشر للجهاز المركزي للتعبئة العامة والإحصاء نسبة 100%

Pressing here





- Main Sections
  - Housing (buildings and dwellings)
  - Population (households and individuals)
  - Establishments (profitable and non profitable)





Exclusive snap-shots from 2<sup>nd</sup> generation



Changing colour scheme ... more flexibility to the user analysis and needs.



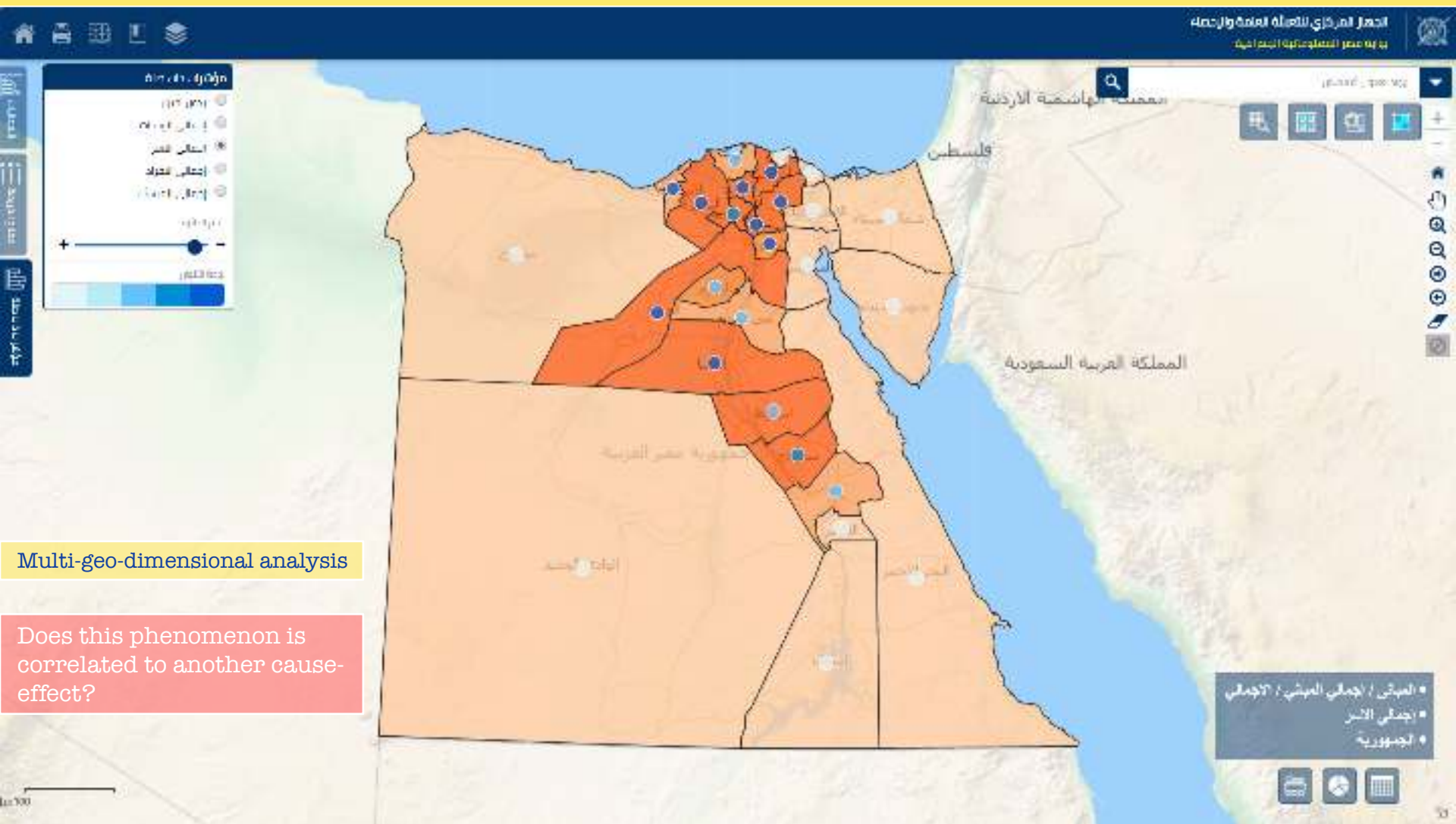








Exclusive snap-shots from 2<sup>nd</sup> generation



Multi-geo-dimensional analysis

Does this phenomenon is correlated to another cause-effect?







[illegible]

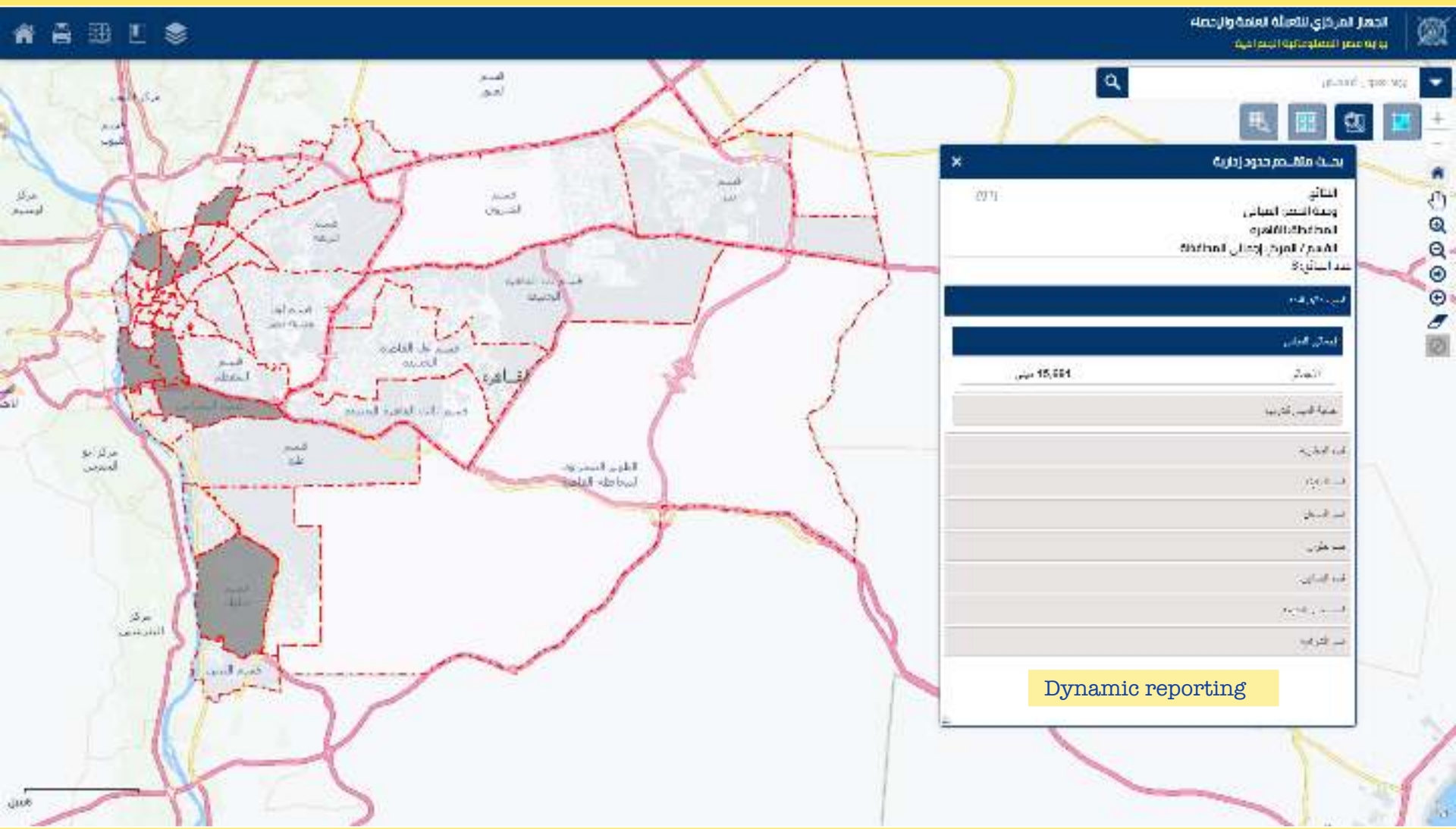










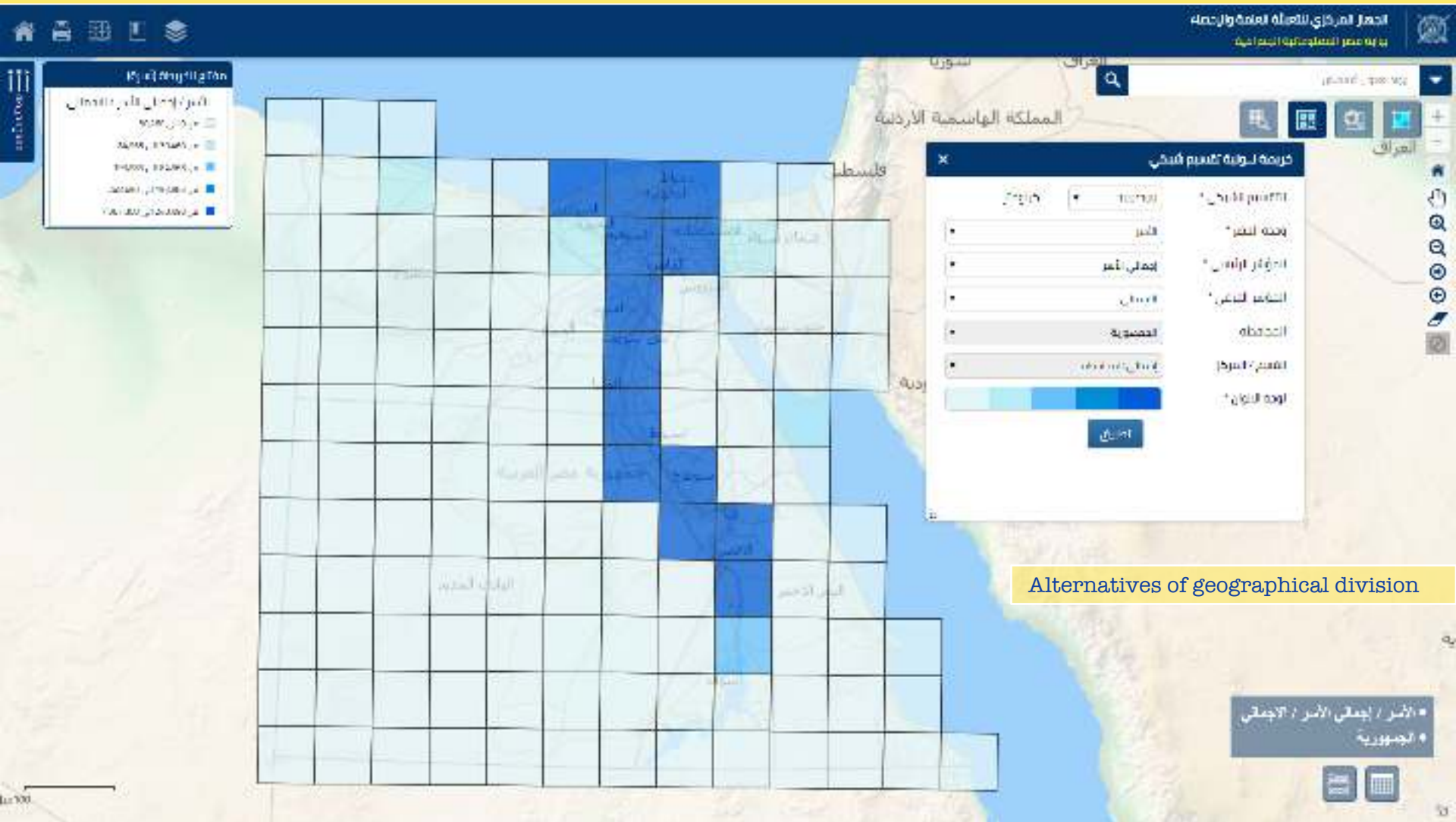






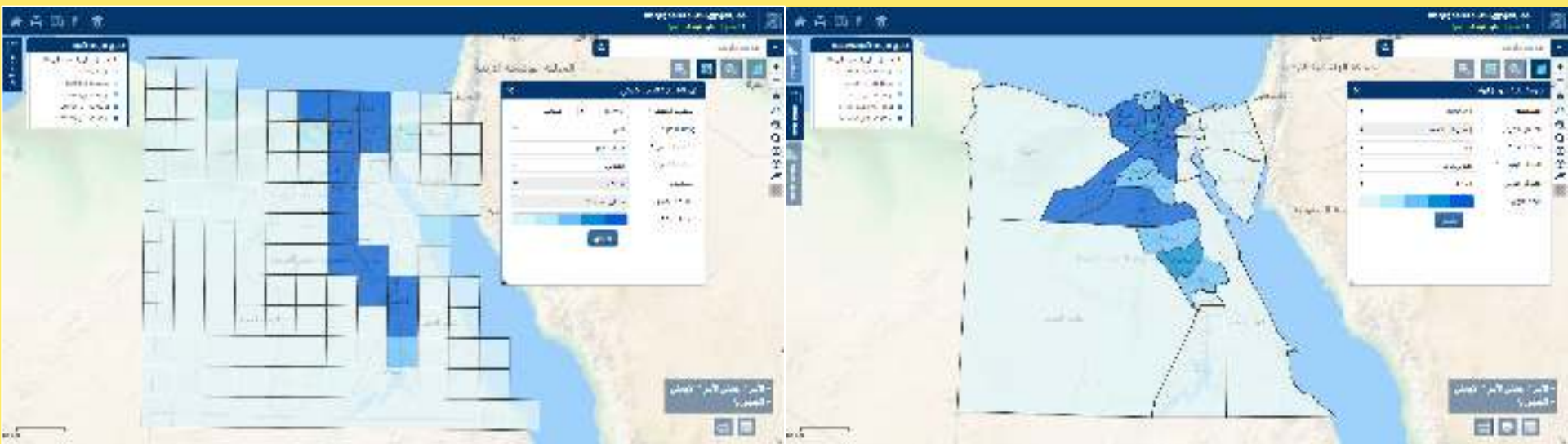


Exclusive snap-shots from 2<sup>nd</sup> generation



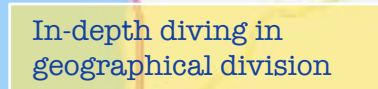


## Exclusive snap-shots from 2<sup>nd</sup> generation



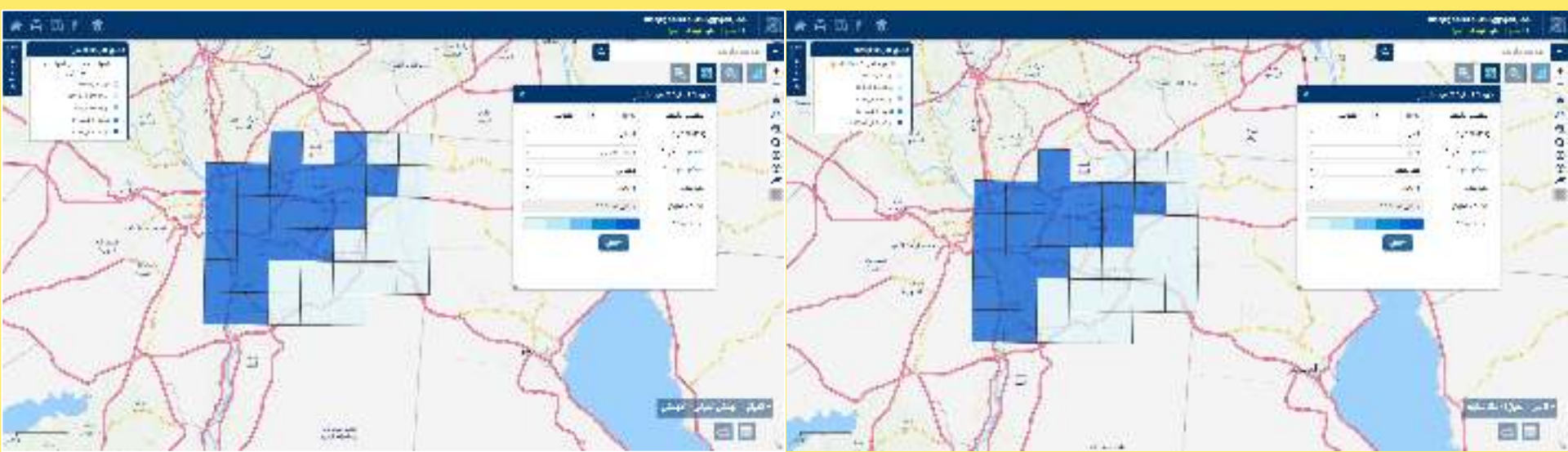
- ⦿ This comparison shows how the accuracy of the gridding approach versus the conventional administrative divisions.
- ⦿ The ultimate importance of such gridding system crystalizes when chronic society problems are being investigated at the gross-rotates. As this approach is considered more reliable in directing the development interventions.





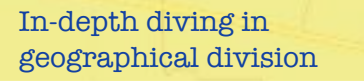


## Exclusive snap-shots from 2<sup>nd</sup> generation



- ⦿ High correlated relationship between total number of building, and the owning of the dwellings.
- ⦿ Means no biasness toward high- socio-economic levels regarding the housing ownership.





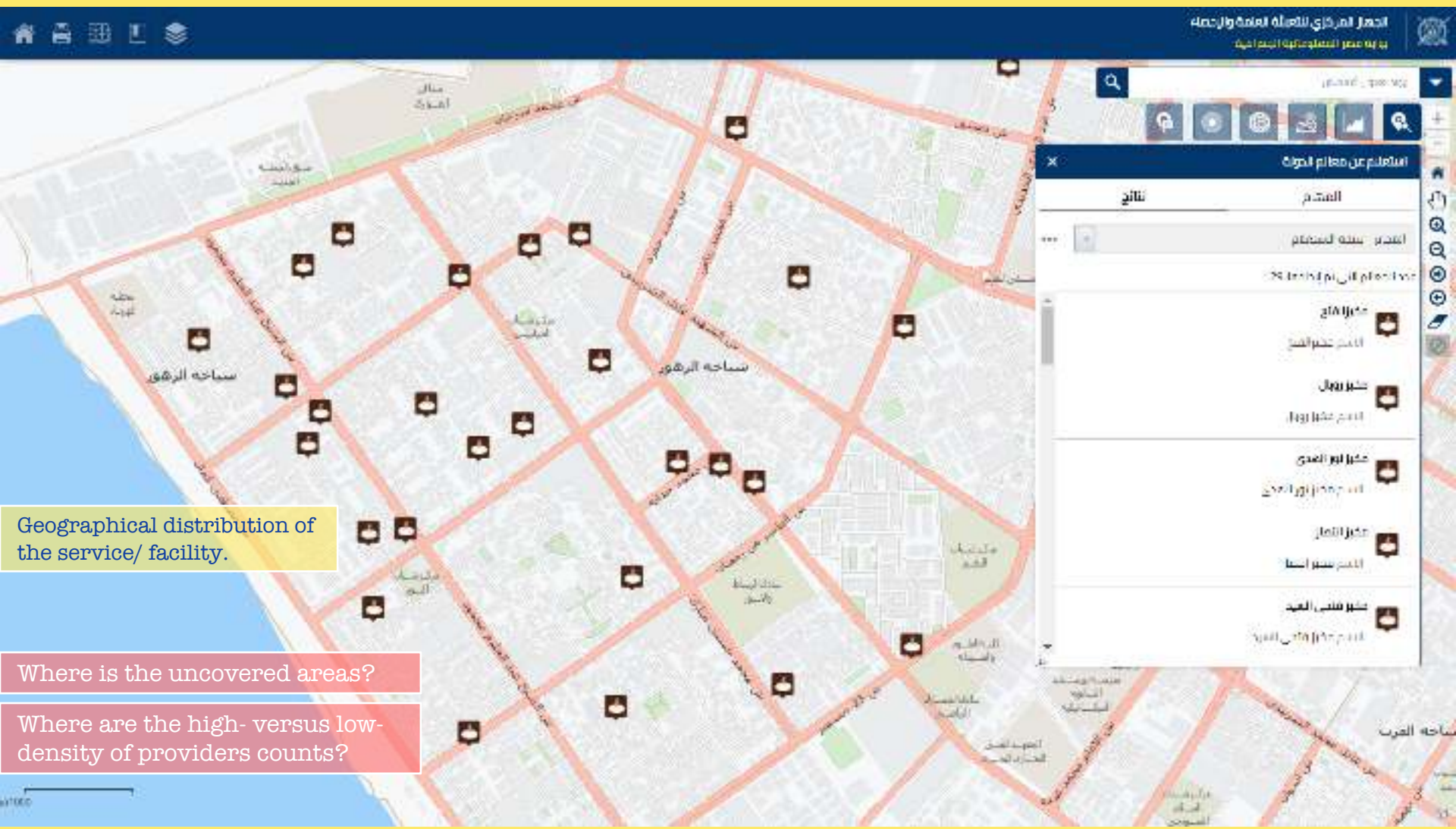




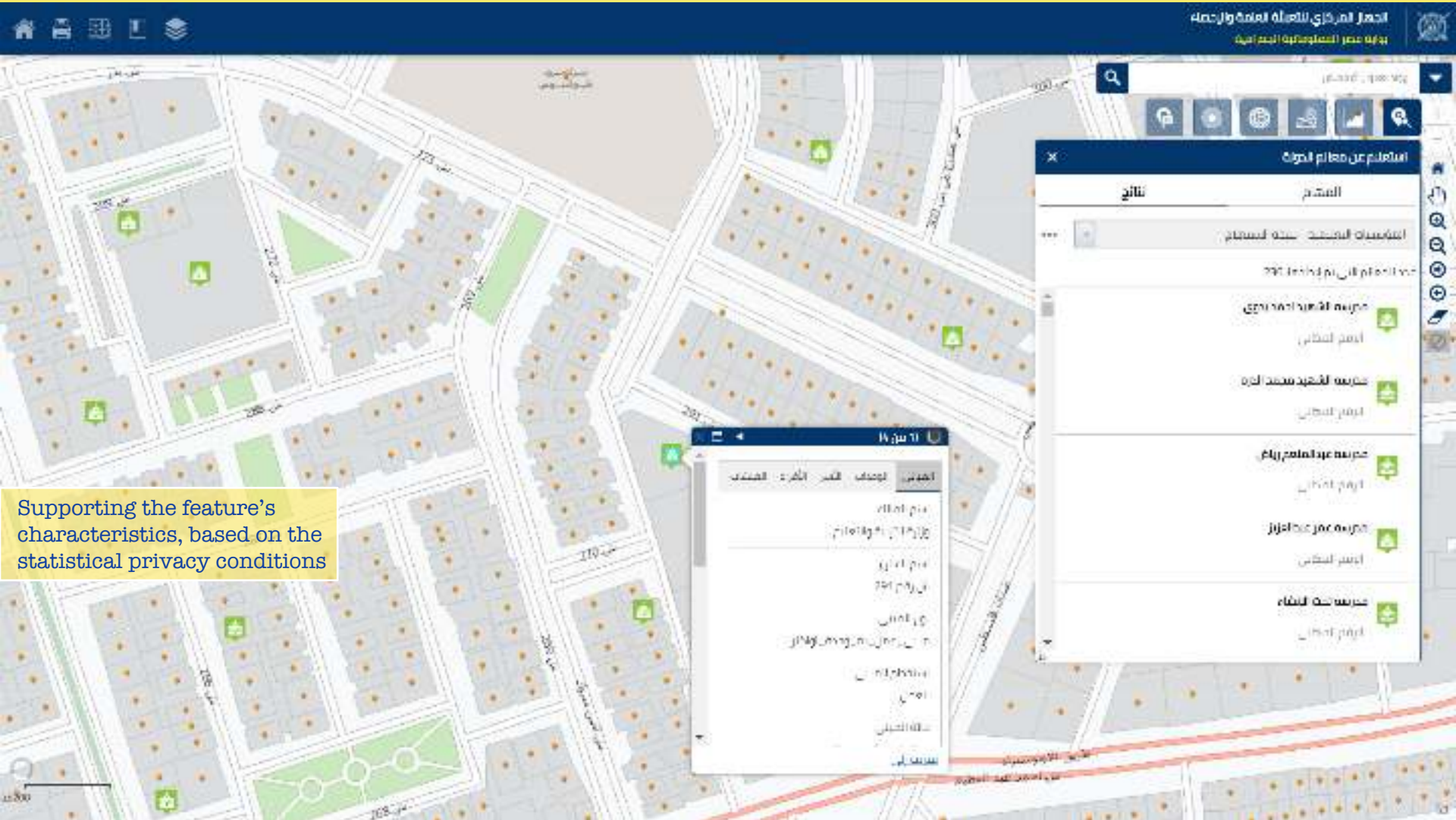
Nine categories of basic services and public facilities

How the population is being served?







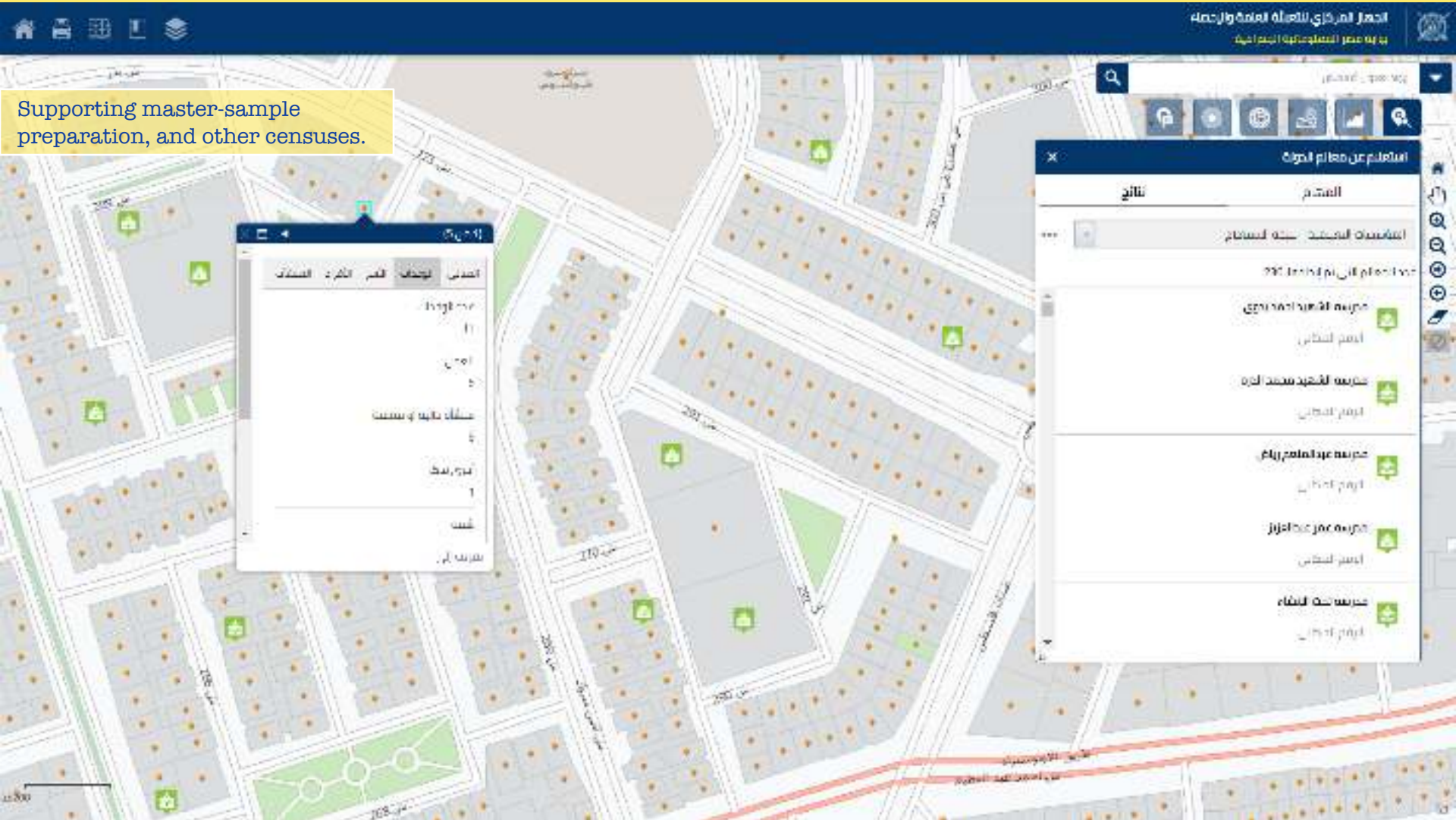


Supporting the feature's characteristics, based on the statistical privacy conditions



Exclusive snap-shots from 2<sup>nd</sup> generation

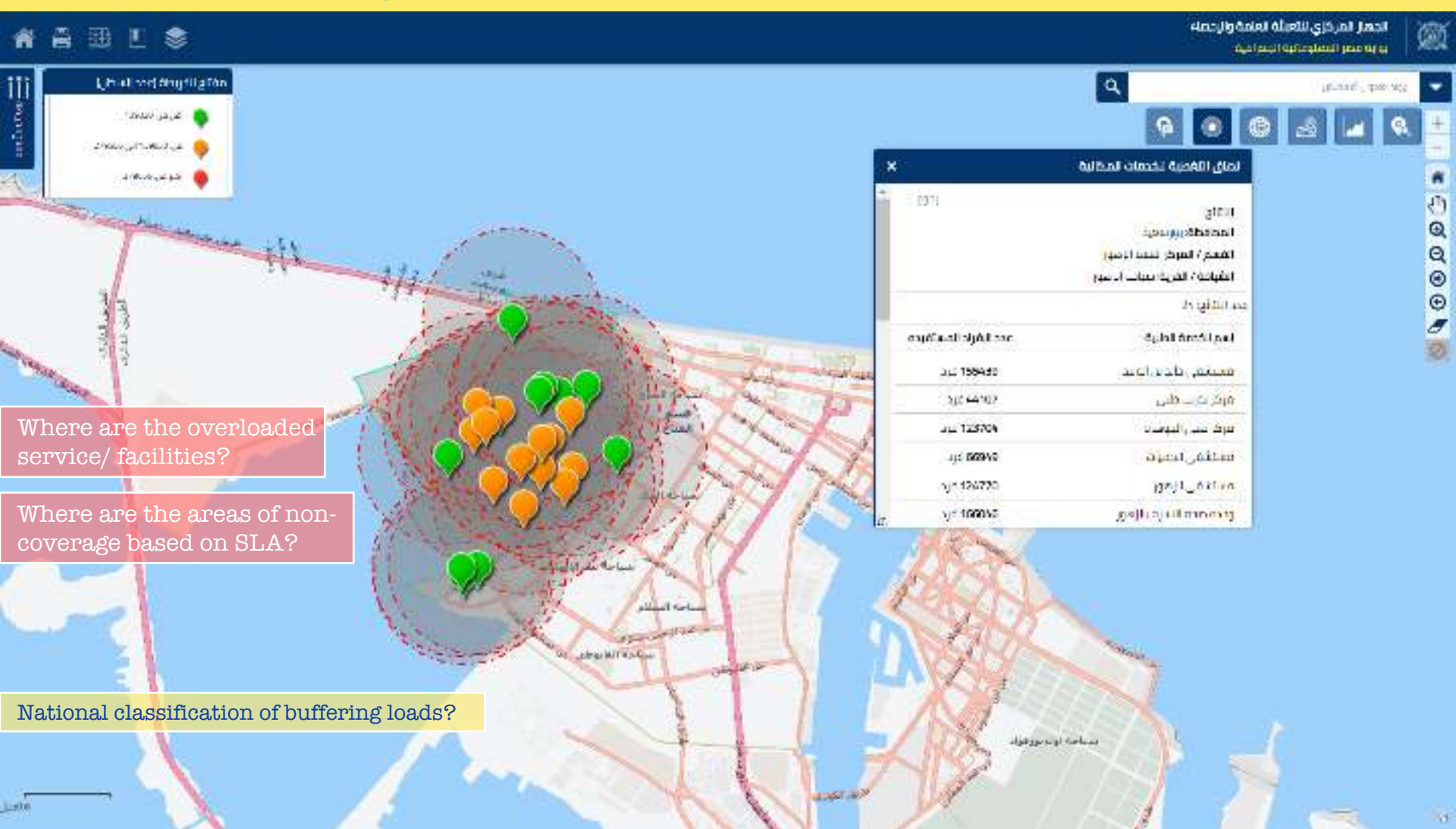
Supporting master-sample preparation, and other censuses.





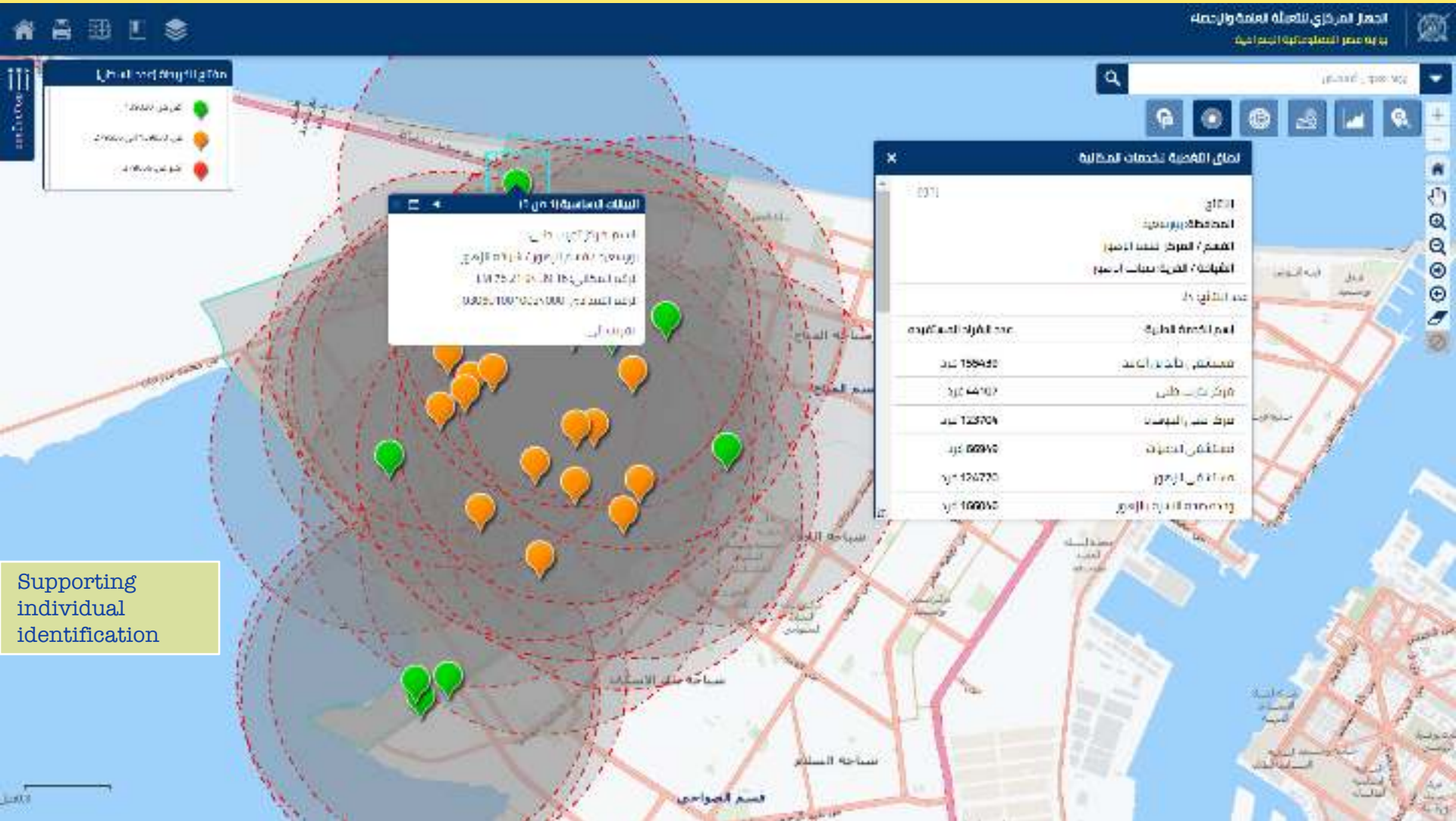




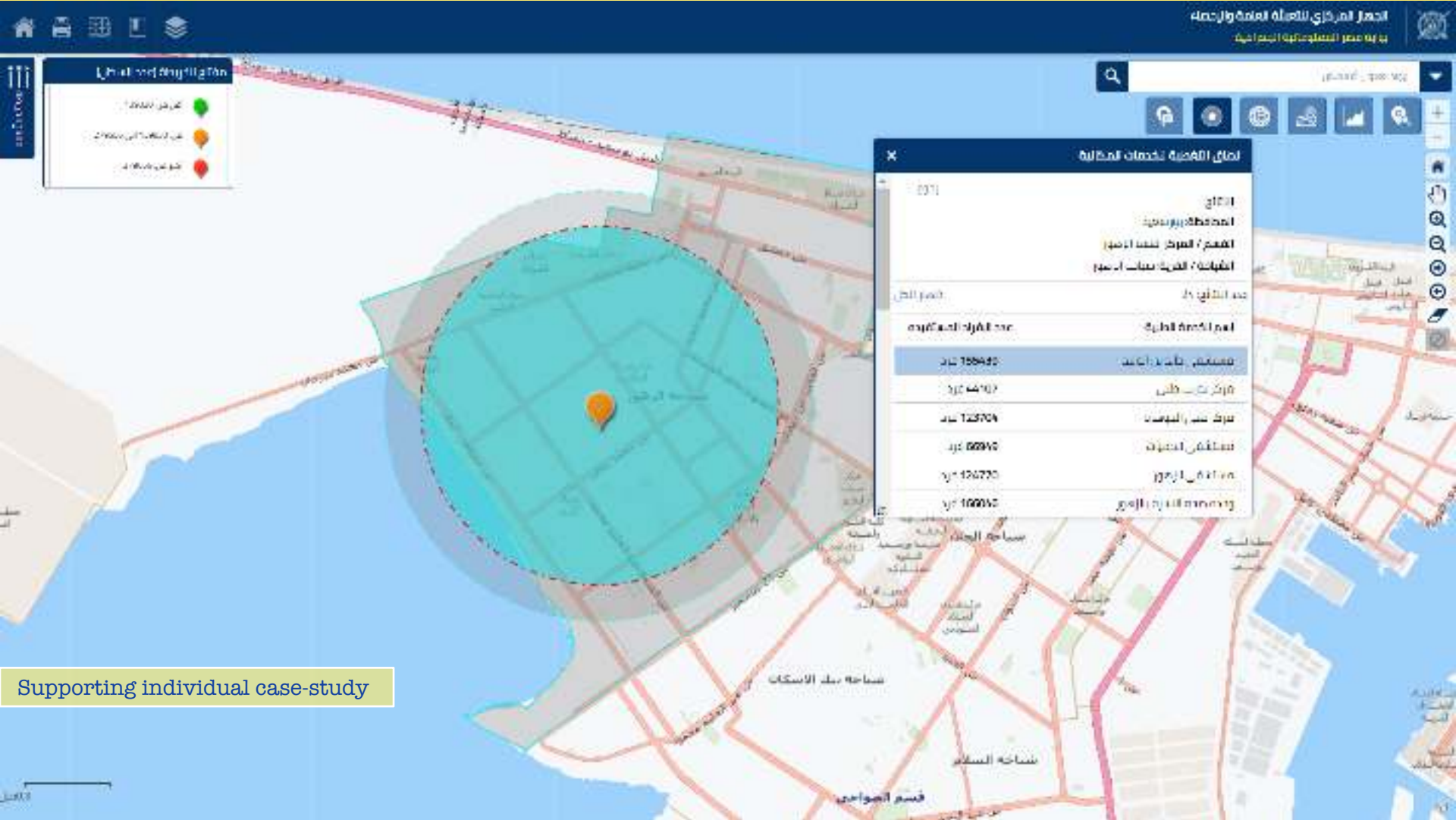




## Exclusive snap-shots from 2<sup>nd</sup> generation

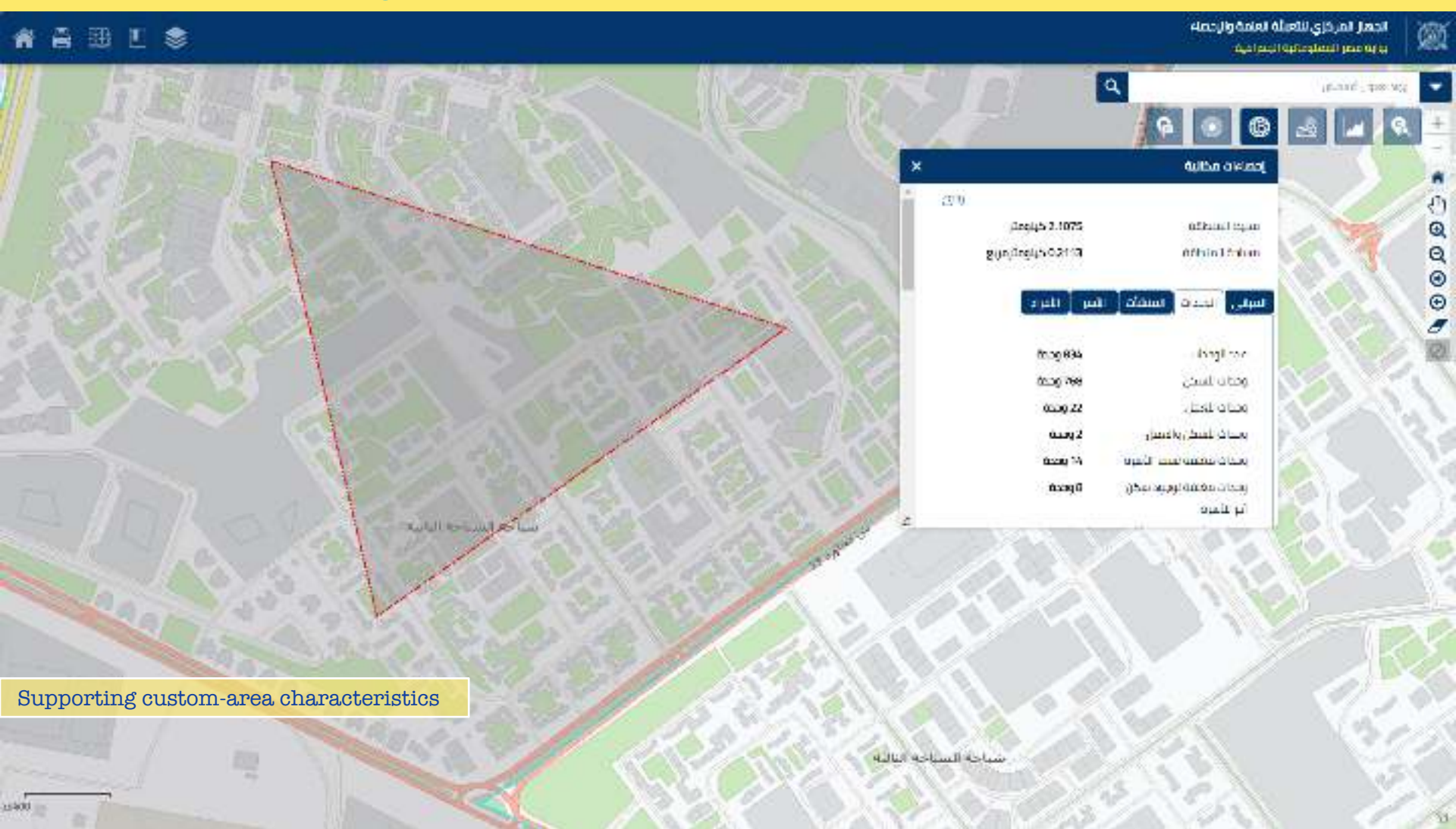




Exclusive snap-shots from 2<sup>nd</sup> generation



Exclusive snap-shots from 2<sup>nd</sup> generation



Supporting custom-area characteristics



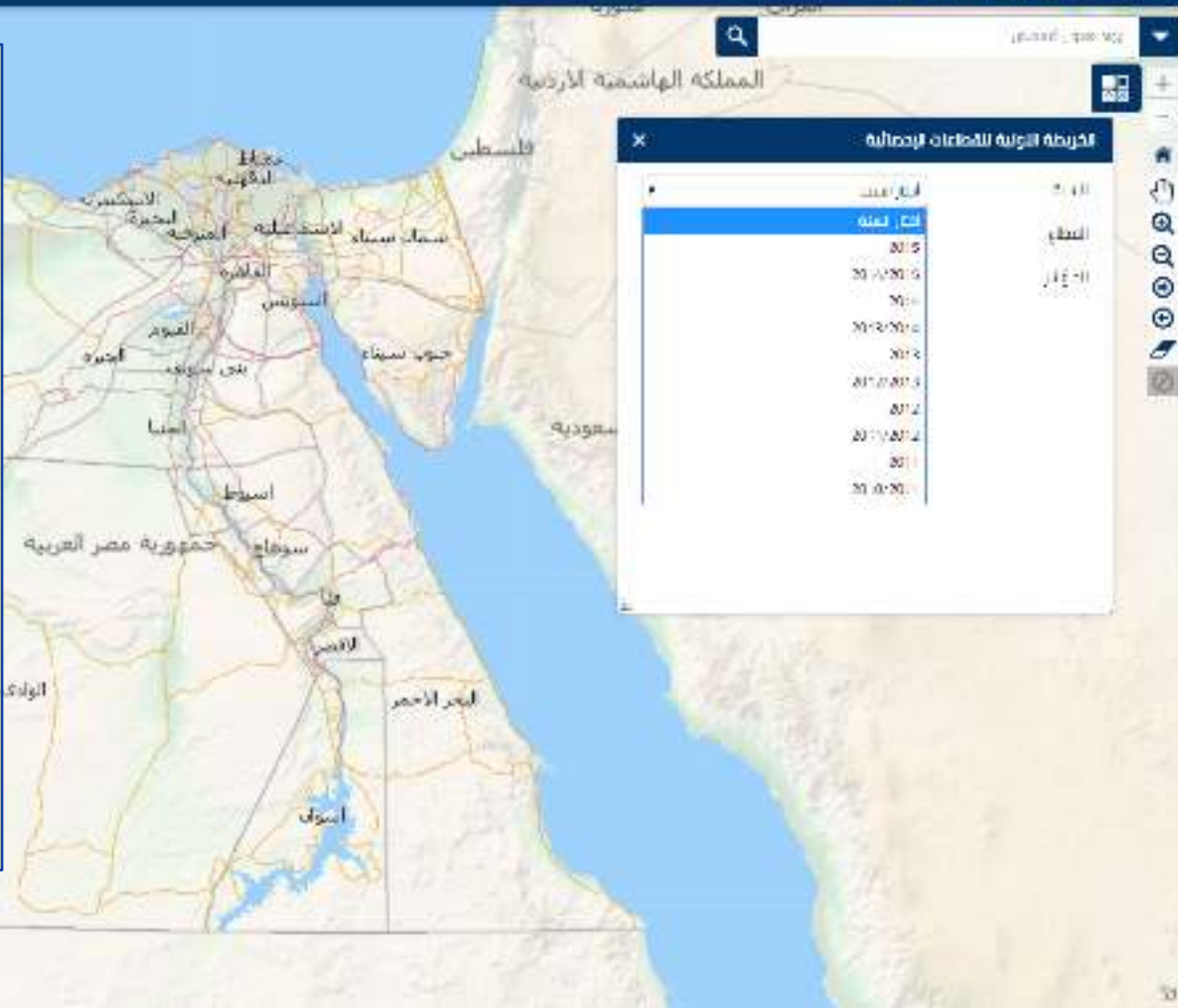


Not less than  
**800** indicators

Not less than  
**3000** time-series

Calendar-based statistics  
**2010-2011 to 2015-2016**

Fiscal-based statistics  
**2011 to 2016**







## Social Sectors

Higher education  
Social services  
Culture  
Social services  
Population  
Vital statistics  
Basic education  
Secondary education  
Vocational education

## Economic Sectors

MSMEs  
Labour market  
Industry  
ICT  
Agricultural











## Exclusive snap-shots from 2<sup>nd</sup> generation



- ⦿ Two different scenarios of unemployment.
- ⦿ If a geographical place is interesting to be covered by development policies, thence unemployment rates will be targeted.
- ⦿ If the objective is to affect on the national figure of unemployment, thence the mass-unemployed should be targeted, means the proportion of unemployed in county to the national figure of unemployed candidates is of interest.



# Acknowledgments Wall



2017 SAG Award Winners

[2017 SAG Award Winners List](#) » [Learn More](#)

Central Agency for Public Mobilization and Statistics and World Food Program



GIS for the Sustainable World Conference

May 24 - 27 | Geneva, Switzerland

Loading...



*Why...* **we are here?**

*What...* **is our message?**

*We here to*

**Share  
Collaborate  
Learn together**



**2063**

Africa we Want



**Egy-GeoInfo**  
بوابة مصر المعلوماتية الجغرافية  
EGYPTIAN GEOGRAPHICAL INFORMATION PORTAL  
[www.geoportal.cpmas.gov.eg](http://www.geoportal.cpmas.gov.eg)





تالعت حرب  
مؤسس أول بنك في مصر

## **Talaat Harb**

Founder of first  
bank in Egypt  
(1920)



# Thanks

From the land of five thousand years of civilization ... the land of Pharaohs