



Geospatial learnership programme underway at Esri South Africa

Building on its belief in the transformative power of education, geospatial software provider Esri South Africa has introduced a fully-sponsored learnership programme which combines theoretical training via an accredited training institution and exposure to practical workplace skills.

Six students were selected to participate in the programme which includes registration for Esri South Africa's diploma in Geo-Information Science and Technology (GISc&T). The two-year diploma is accredited with the South African Geomatics Council, the South African Qualifications Authority and the Council on Higher Education.

As part of the two-year learnership programme which kicked off last year, the students have been exposed to Esri South Africa's ArcGIS platform and have participated in instructor-led training classes and self-paced e-learning courses. They have learnt how to plan, design and execute geographic information system (GIS) projects; in the process gaining hands-on experience with the efficient application of geospatial best practices.

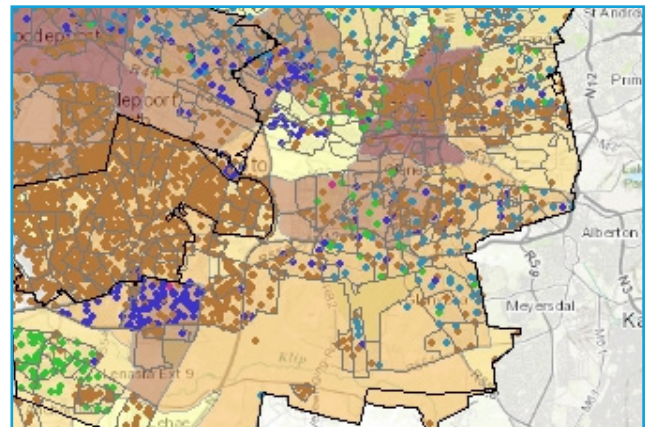
Chesray Jansen, one of the participants, says "the learnership programme has taught me the value of GIS", and Nompumelelo Msweli says the learnership has "helped me to improve my decision making, and communication skills." Another of the students, Noxolo Gumede, adds "This past year has been a very important and life changing year. Esri South Africa offered the support and motivation we needed to ensure our success."



Esri South Africa Learnerships (left to right) Chesray Jansen, Noxolo Gumede, Naveshni Naidoo, Mngqobi Mdinginya and Kamogelo Phalane.

To test the application of their GIS skills to real world challenges, the learners were recently tasked with investigating Johannesburg's crime patterns. The process of executing this group GIS project taught the students essential skills needed to prepare them for the workplace. With presentation skills identified as a fundamental competency, they were also required to present their findings to the City of Joburg's GIS user group.

Esri South Africa is excited with the commitment and enthusiasm the students participating in the learnership programme have shown to date. Enhanced employment opportunities are some of the benefits to be obtained by addressing the gap between education and training and the market place, and it is intended that the students successfully transform their lives by enhancing their career prospects in the geospatial field.



Map Illustrating Population Density and Crime Patterns for the City of Johannesburg - prepared by Esri South Africa Learnerships.



Esri South Africa Learnerships with Marcelle Hattingh (Director : Corporate Geo-Informatics) and Lesley Adams (Deputy Director : Projects and Customer Services - Corporate Geo-Informatics) from the City of Johannesburg.